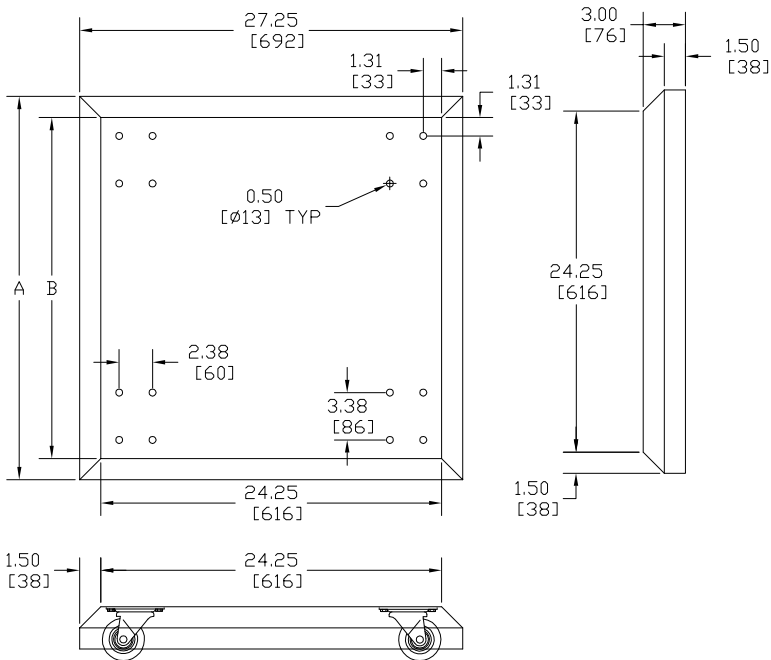
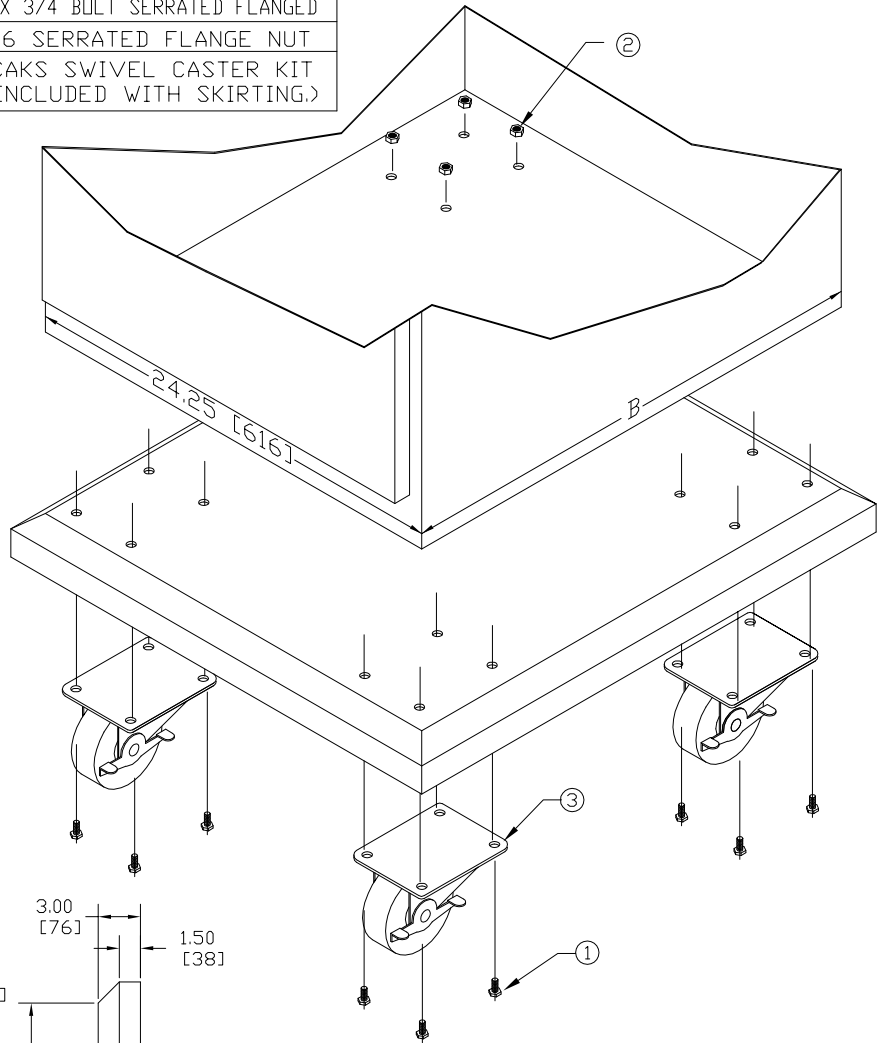


SKIRTING

PART # STEEL	PART # S.S.	ENCLOSURE DEPTH	A	B
SCE-SKR27	SCE-SKR27SS	24.25 [616]	27.25 [692]	24.25 [616]
SCE-SKR35	SCE-SKR35SS	32.25 [819]	35.25 [895]	32.25 [819]

ITEM #	QUANTITY	PART
1	16	3/8-16 X 3/4 BOLT SERRATED FLANGED
2	16	3/8-16 SERRATED FLANGE NUT
3	1	SCE-CAKS SWIVEL CASTER KIT (NOT INCLUDED WITH SKIRTING.)



INSTALLATION INSTRUCTIONS

1. DRILL HOLES IN BOTTOM OF WORKSTATION USING EXISTING HOLES AS LOCATORS.
2. INSTALL SKIRTING AND CASTERS TO WORKSTATION WITH HARDWARE PROVIDED.