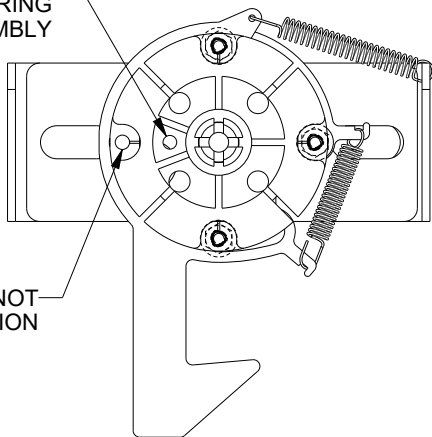
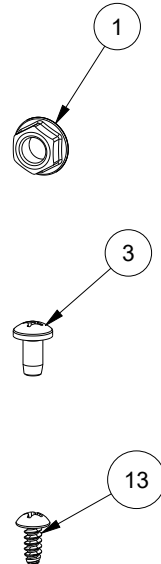
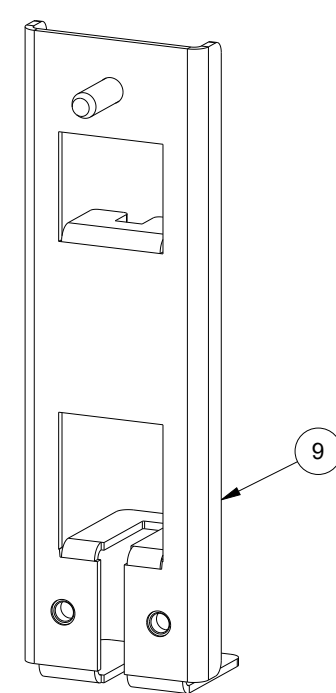
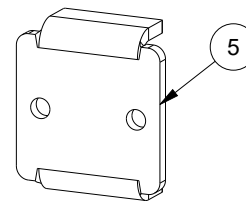
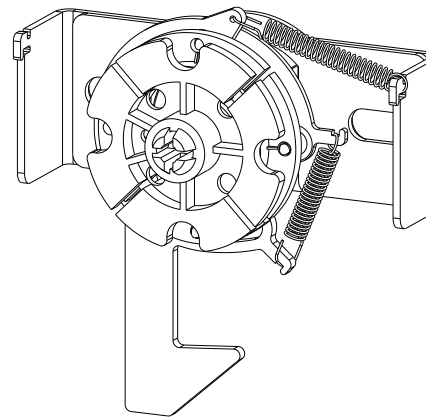


NOTE LOCATION OF .130
DIAMETER HOLE DURING
ASSEMBLY



#8 HEX HEAD SCREW NOT
REQUIRED IN THIS LOCATION


BILL OF MATERIAL				
ITEM	SHIPS LOOSE	QTY	PART DESCRIPTION	PART I.D.
1		2	Flange Nut - Serrated - 0.25-20 - Steel - Zinc Plated Clear	100882
2	Installed In Subassembly	1	Flange Nut - Serrated - 0.25-20 - Steel - Zinc Plated Clear	100882
3		2	Thread Cutting Machine Screw - Pan Head Phillips - 10-32 X 0.38 - Steel - Zinc	102479
4	Installed In Subassembly	1	Door Rod Guide Base - 0.58 X 1.15 X Polyamide 66 - 30% Glass Reinforced - Black	128143
5		1	Mechanical Intrik - Overlapping Door Catch Retainer - 1.69 X 1.50 X 0.57 - Steel	128369
6	Installed In Subassembly	2	Mechanical Interlock - Extension Spring - 1.06 X 0.19 X 0.02 Music Wire - Steel	129835
7	Installed In Subassembly	1	Mechanical Interlock - Cable Pulley - 2.063 X 0.75 X PA 6 30% Glass Filled	130213
8	Installed In Subassembly	1	Mechanical Interlock - Cable Pulley Base - 1.40 X 1.828 X PA 6 30% Glass Filled	130214
9		1	Over Head Interlock - Door Rod Catch Bracket - Steel Zinc Plated	130522
10	Installed In Subassembly	1	Overhead Interlock - Pulley Hook - Steel Zinc Plated	130524
11	Installed In Subassembly	1	Overhead Interlock - Pulley Mounting Bracket - Steel - Zinc Plated	130525
12	Installed In Subassembly	1	Overhead Interlock - Spring Retainer - Steel - Zinc Plated	130526
13		1	Blunt Screw - Round Head Phillips - 8 X 0.38 - Steel - Zinc Plated Clear	130590
14	Installed In Subassembly	3	Thread Forming Screw - Hex Head - 8 X 0.25 - Steel - Zinc Plated Clear	130591
15	Installed In Subassembly	1	Overhead Interlock - Pulley Mounting Bracket - Steel - Zinc Plated	131572



DESCRIPTION:

Mechanical Interlock Cable Operated - Overhead Interlock Kit for Overlapping two door

Kajdan		Corrected cable pulley orientation and added a view to show the correct location of the .130 diameter hole.	05/15/23
BY	REV.	DESCRIPTION OF CHANGES	DATE

DRAWN BY: Kajdan	CUSTOMER: SAGINAW CONTROL & ENGINEERING		
DATE: 04/18/22	PART NUMBER: SCE-130521		REV: --
PA 6 30% GLASS FILLED NYLON	CUSTOMER I.D.: SCE2	 Your Enclosure Source®	
MATERIAL UNLESS SPECIFIED	SHEET: 1 OF 1		