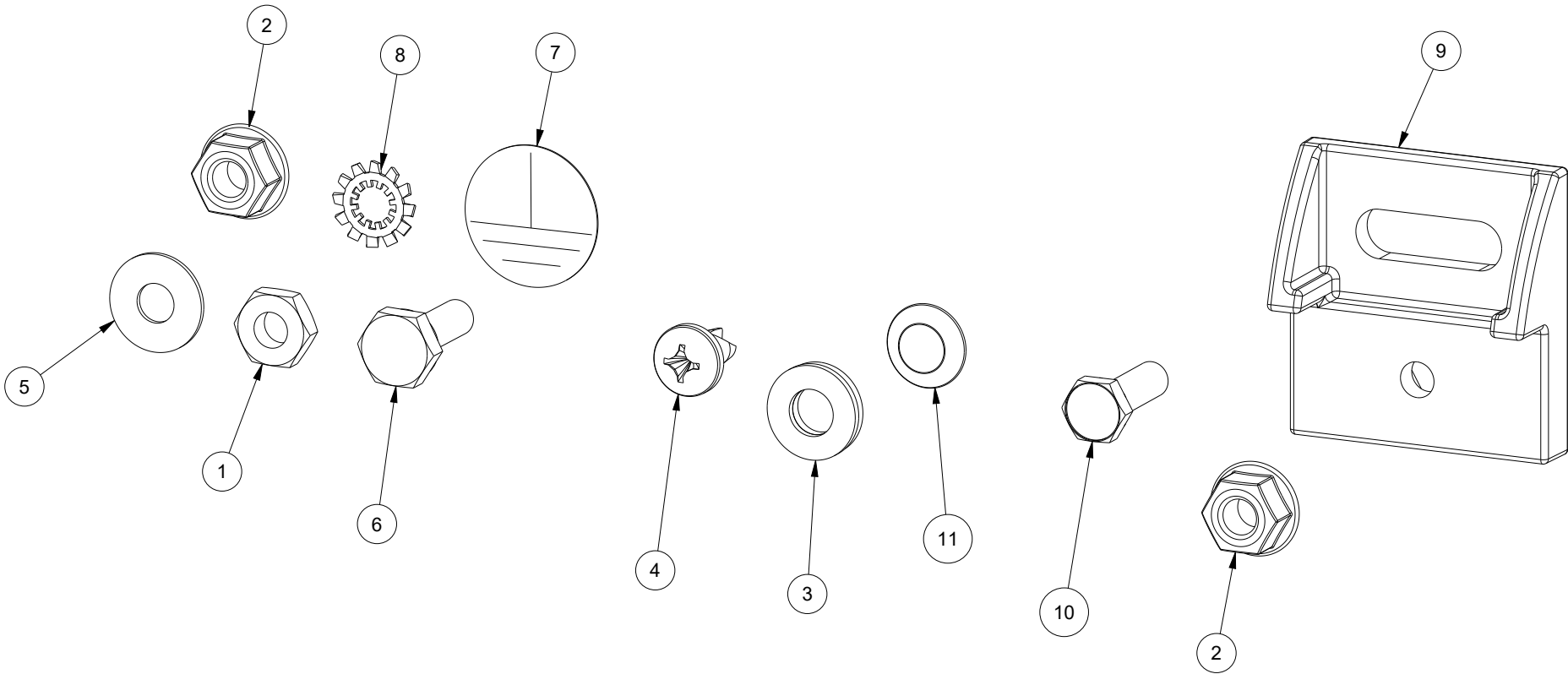



BILL OF MATERIAL			
ITEM	QTY	PART DESCRIPTION	PART I.D.
1	1	Hex Nut - 10-32 - Steel - Zinc Plated Clear	100896
2	5	Flange Nut - Serrated - 10-32 - Steel - Zinc Plated Clear	100897
3	4	Sealing Washer - 10-32 - 0.26 X 0.496 - Galvanized Steel w/ EPDM Gasket	102152
4	4	Thread Cutting Machine Screw - Pan Head Phillips - 10-32 X 0.38 - Steel - Zinc	102479
5	1	Flat Washer - 10-32 - 0.21 X 0.52 - Steel - Zinc Plated Clear	103241
6	1	Hex Head Cap Screw - Full Threaded - 10-32 X 0.63 - Steel - Zinc Plated Clear	104937
7	1	Ground Label - 0.75 inch Dia.	108268
8	1	Tooth Lock Washer - Internal/External - 10-32 - Steel - Zinc Plated Clear	114333
9	4	Mounting Feet ELJ - 1.52 X 1.468 X 0.57 X 0.28 - Glass Filled Nylon	120794
10	4	Hex Head Cap Screw - Full Threaded - 10-32 X 0.63 - Stainless Steel - Unslotted	120848
11	1	Bolt Pack - Hole Plug - Kit - .25 dia. - ABS Plastic - Black - 4 per pack	128337



DESCRIPTION:
Master Bolt Pack - ELJ Hardware - 4 Pack - Polyamide Black

DRAWN BY: Titus	CUSTOMER: SAGINAW CONTROL & ENGINEERING		
DATE: 10/09/18	PART NUMBER: SCE-120706		REV: --
MATERIAL UNLESS SPECIFIED SEE BILL OF MATERIAL	CUSTOMER I.D.: SCE1	 Your Enclosure Source®	
	SHEET: 1 OF 1		